

Seeing
what's
important



webvideo_star 2000

Digital web inspection

vision digital
register colour

eltromat
tradition meets innovation



- _ Quick to print
- _ Minimising waste
- _ Ensuring print projects of high quality
- _ Increasing customer satisfaction
- _ High degree of automation
- _ Optimising processes
- _ Increasing productivity
- _ Reducing costs

Seeing what's important

Digital web inspection of the highest standard

webvideo_star 2000 is the modular web monitoring, inspection and control system by eltromat. With its high quality technology and excellent operating concept, the system offers a whole range of benefits in order to meet the growing quality demands of your customers at all times.

The modularity of the **webvideo_star 2000** allows the system to be customised to individual production processes.

As an option, **webvideo_star 2000** can be expanded by the following modules:

- _ Roll protocol
- _ Sampling Inspection (_sis)
- _ Inline Colour Measurement (_icm)
- _ Barcode Verification (_bc)

Specifically for flexo printing

- _ automatic CI Register control (_ci)
- _ semi-automatic CI Register control (regi_touch)

eltromat – excellent image quality is our trademark

In order to meet our high quality requirements, we equip our web inspection systems exclusively with industry-standard digital cameras.

Your benefits:

- _ Excellent image quality
- _ Digital image transfer from camera to monitor in real time
- _ Light intensive zoom lenses
- _ Optical zoom
- _ Magnification while maintaining the full resolution

Standard functions



Picture-in-picture display

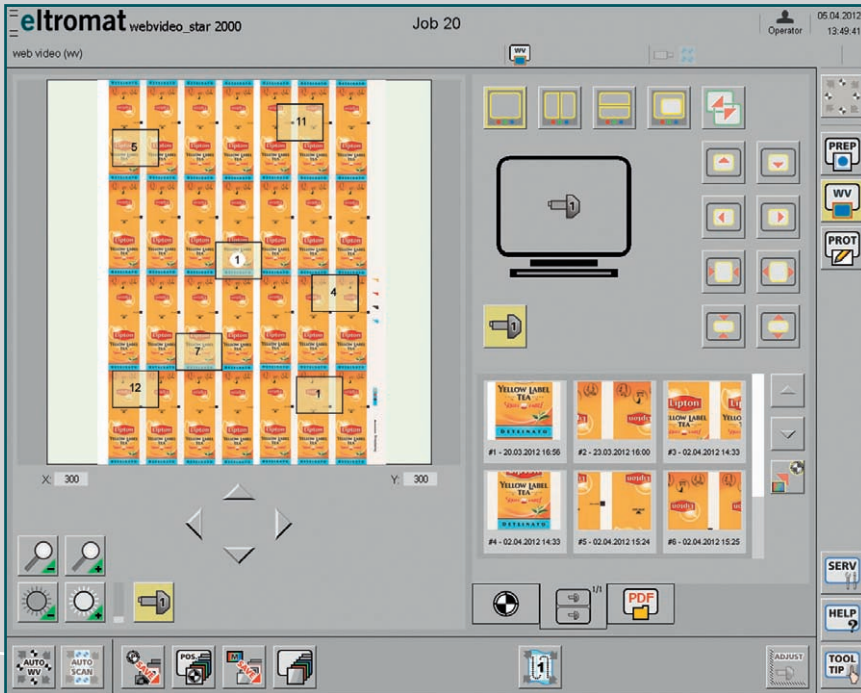
Standard functions of the basic system

Even the basic model of **webvideo_star 2000** includes a multitude of tried and tested functions for effective print image monitoring.

Image reproduction / split-screen

With the split-screen function, the operator sees the current live image simultaneously with a saved reference print (good sample) or a second camera. This makes it possible to visually compare the print image to the reference print, which increases the reliability of the production process.

During this process, the images can be displayed horizontally, vertically or as a picture-in-picture display in a freely selectable size.



User interface with print format preview

Print format preview

The print format is scanned with the camera (alternatively with camera 1 or camera 2) for a quick preview and orientation. This will be displayed on the operator monitor as a complete print format.

A simple and repeatable approach of the desired camera position is possible for the operator at any time via the display of the entire print format.

Automatic mode

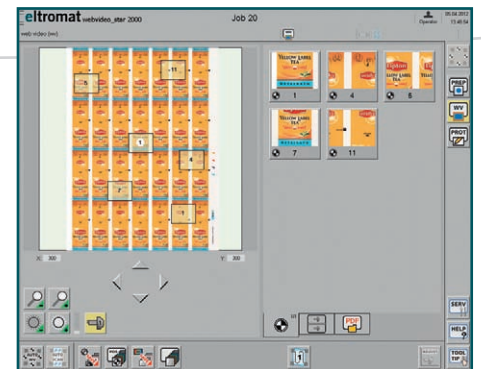
In the scan mode, the entire print format is monitored on the basis of automatically defined increments. This offers a comprehensive print check at minimum set-up time.

With the step and repeat function, the increments in x and y direction can be selected so that every impression can be monitored consecutively.

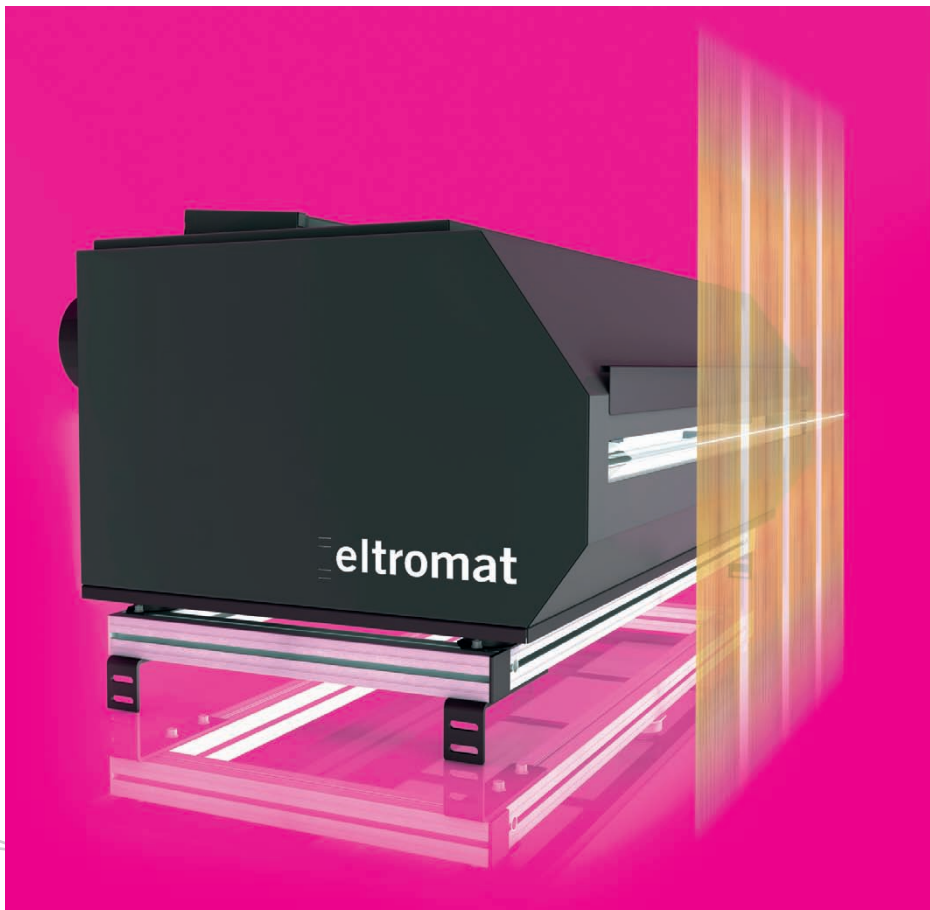
Position memory

With the position memory, the operator can monitor individual sections of the print sheet. First, the positions are saved and subsequently scanned during the production. Zoom, iris and flash settings can be adjusted for each position as required and can be saved.

To ensure reliable production monitoring, the scan mode and position memory are combined to monitor the entire print image as well as the individually saved positions. The operator can generate a job-specific automatic cycle simply and quickly with adjustable dwell times of the camera and thus always has control of the production sequence.



User interface with position memory



100% print inspection

The expansion and connection to the 100% print inspection system **twin_check** is possible at any time. Thus, the basis for a 100% quality control is created and at the same time the early error detection helps to save waste significantly.

The eltromat workflow solutions for 100% print quality connect the prepress, press and post press processes and enable efficient and effective defect detection.



Joystick

Joystick

The keypad with joystick allows a rapid and intuitive control of the cameras by the operator. The operator has direct access to the most important functions, such as focus, brightness, zoom, flash selection and automatic mode by means of the keypad.

Snap_Shot_Gallery

During production you have the option to take a snapshot of the live image by pressing a button. This recording is placed in the Snap_Shot_Gallery. Here you can store up to 50 images per job, with a worldwide access through your corporate network.

Additional trigger sensor (PPS)

With the additional trigger sensor you are in control of web tension changes, which may adversely affect the image stability. While other images are still running through, **webvideo_star 2000** is already assisting you during set-up and the web inspection function is already available to you during that phase.

Cameras

The right equipment for every application:

Additional cameras for web monitoring and web inspection.

An even faster inspection of the running web can be achieved by using an additional camera.

Furthermore, this option enables the parallel operation of visual inspection and automatic error detection or inline colour measurement. The images of both cameras can be displayed simultaneously on two monitors.

Camera versions

- _ Digital 1-chip camera
- _ Digital 3-chip camera

with

- _ Different optical zoom intensities
- _ Different illumination units
- _ Motorised traverse bars
- _ Zoom presetting
- _ Iris presetting

and additional TFT monitors for supplementary display of the live image

- _ 19"
- _ 40"



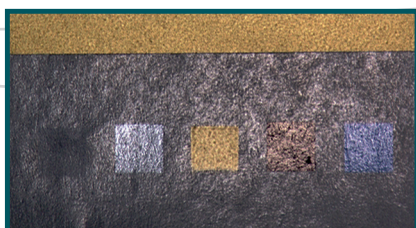
without UV flash



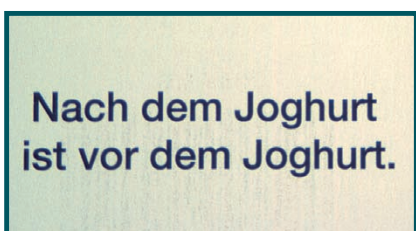
with UV flash



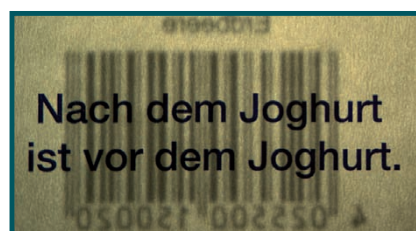
without lacquer flash



with lacquer flash



without power flash



with power flash

Illumination units

Special requirements call for innovative solutions!

eltromat provides a multitude of special lighting equipment for a variety of requirements. User skills proven in practice and decades of experience by eltromat continue to set new standards in product development.

Special flashes for

- _ Cold seal
- _ Lacquers
- _ Fluorescent lacquers
- _ Holograms
- _ Embossing
- _ Register comparison top to bottom in translucent procedure (motorisation as an option)
- _ Shadow-free illumination of the print on transparent material (reverse print, front print)

Innovations for your success!



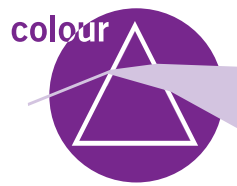
Seeing what is important

- _ 100% print inspection
- _ Web viewing
- _ Quality workflow



Quickly in register

- _ Register control
- _ Sensor for low-contrast colours and varnishes



Fine colour matching

- _ Spectral colour measurement
- _ Densitometric ink setting



Individualised quality

- _ Print defect detection
- _ Inspection of variable data
- _ Register control

eltromat
tradition meets innovation

eltromat GmbH
Herforder Strasse 249-251
33818 Leopoldshoehe
Germany

T +49 5208 987-600
F +49 5208 987-649
info@eltromat.de
www.eltromat.de